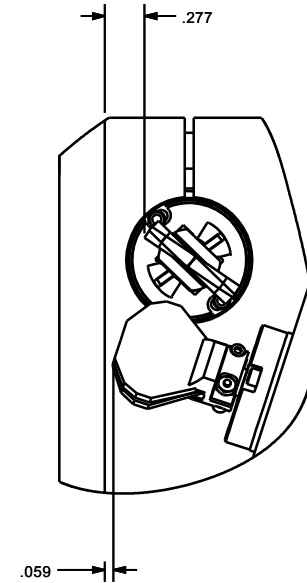
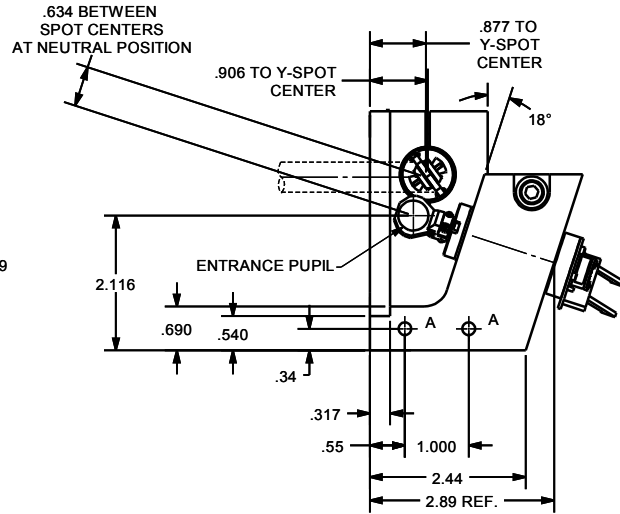
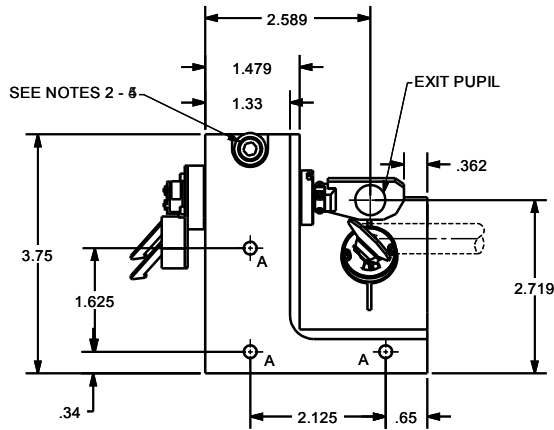
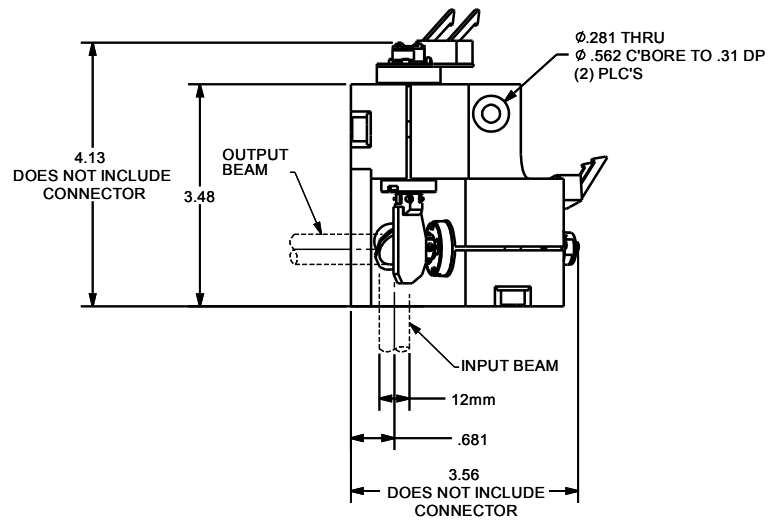


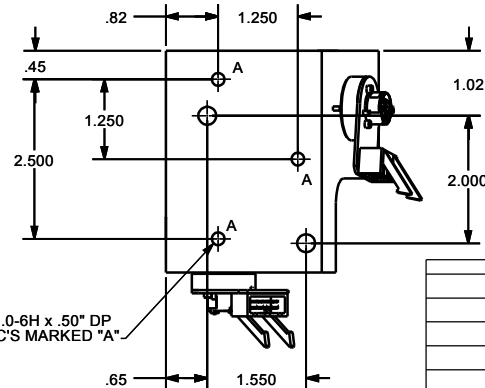
ECO		REV		DESCRIPTION	APPR	DATE
N/A	B				JHL	Dec-04
3435	C			Change label by C. X. Y Mount change the torque for clamp screw from 100 in*lb to 110 in*lb Remove dimension 2.719 Change dimension to .34 from .340 Add dimension 2.691 Remove dimension 4.13, add 4.13 instead Remove dimension 3.62, add 3.55 instead	JZ	05/15/06



AUXILIARY VIEW
SCALE 3:2
DIMENSIONS ON THIS VIEW REPRESENT SMALLEST DISTANCES DURING MIRRORS' FULL ANGULAR RANGE.

NOTES:

1. ALL DIMENSIONS ARE FOR REFERENCE ONLY.
2. SCREW SIZE = #1/4-20 x 1.25" LONG.
3. HEX KEY SIZE = 3/16"
4. RECOMMENDED SCREW TORQUE = 110 in*lb (12.43 N*m)
5. CLAMP SCREW TORQUE TOLERANCE = ± 5%.



M6x1.0-6H x .50" DP
8 PLC'S MARKED "A"

These drawings and specifications are the property of CAMBRIDGE TECHNOLOGY and shall not be reproduced, or copied, or used as the basis for the manufacture, or sale of apparatus without the written permission of CAMBRIDGE TECHNOLOGY, INC.

UNLESS OTHERWISE SPECIFIED DIMENSIONS ARE IN INCHES		DRN		CAMBRIDGE TECHNOLOGY, INC. 109 SMITH PLACE CAMBRIDGE, MA 02138 - USA
TOLERANCES		ENG	JHL 12/15/04	
.XX± .010	ANGLES± 0°-30'	APPR		TITLE
.XXX± .005		PROJECTION		6231C XY MOUNT INTERFACE, RH Ø12mm BEAM, 40° OPT.
.XXXX± .0005		DRAWING SIZE: C		
[] INDICATES mm	SURFACE ROUGHNESS	MATERIAL		DRW. NO.
BREAK ALL SHARP EDGES		6061-T6 ALUMINUM		REVISION
FINISH	BLACK ANODIZE	USED ON		D06113 C
				SCALE 2:3
				SHEET 1 OF 1