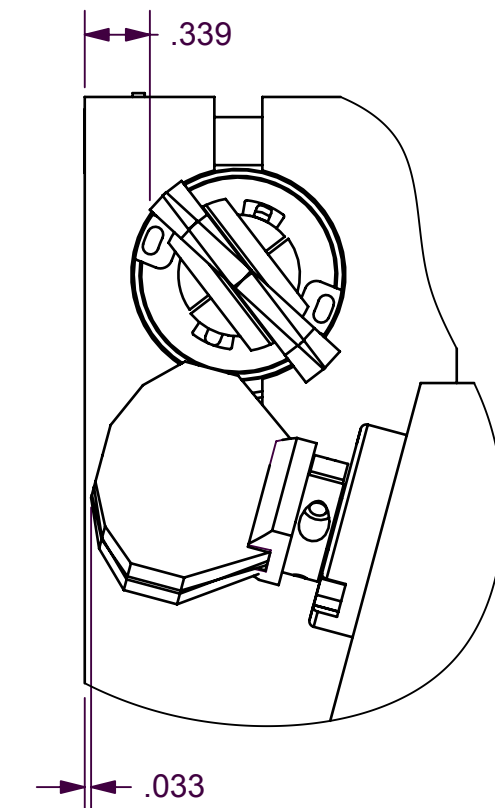
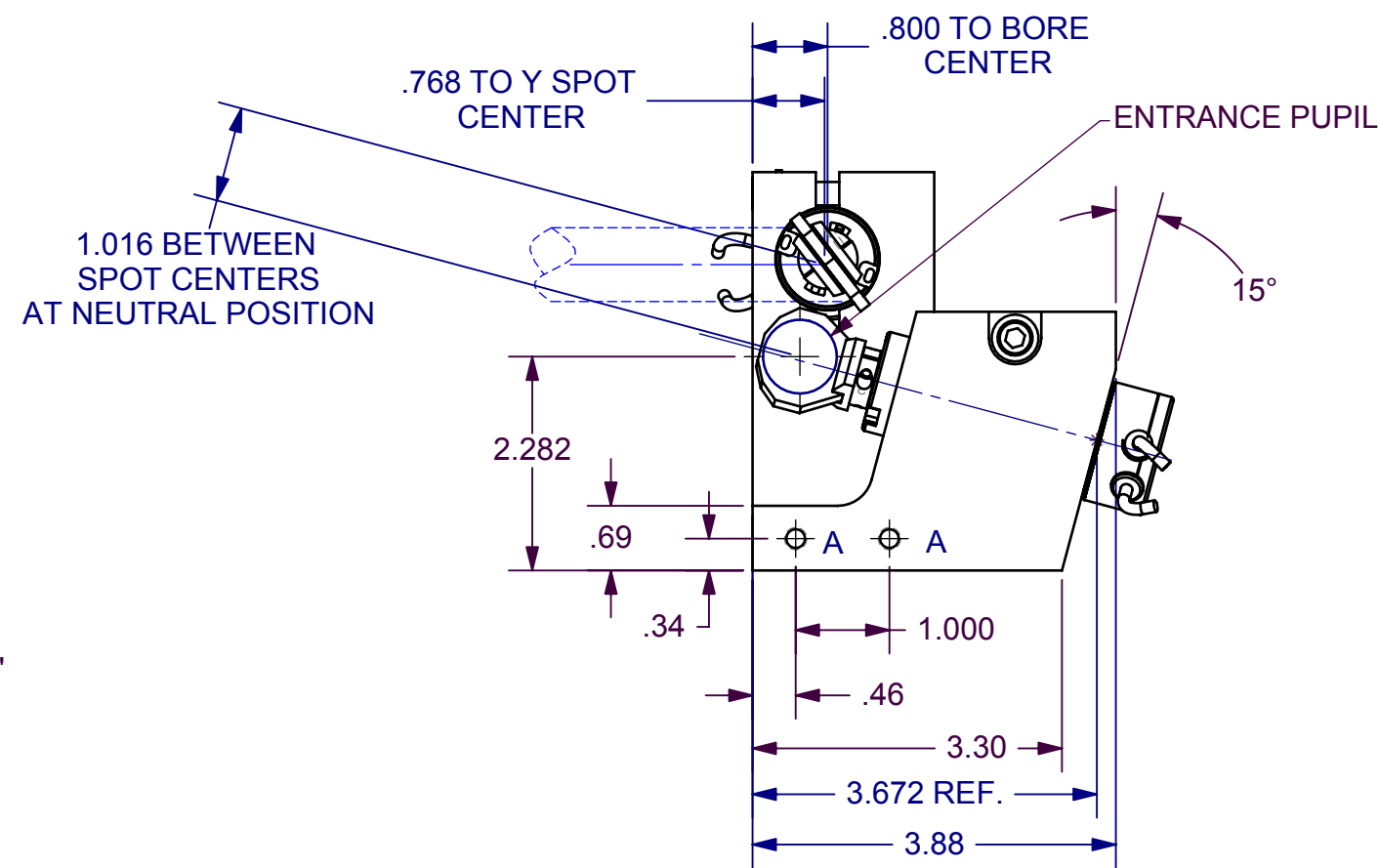
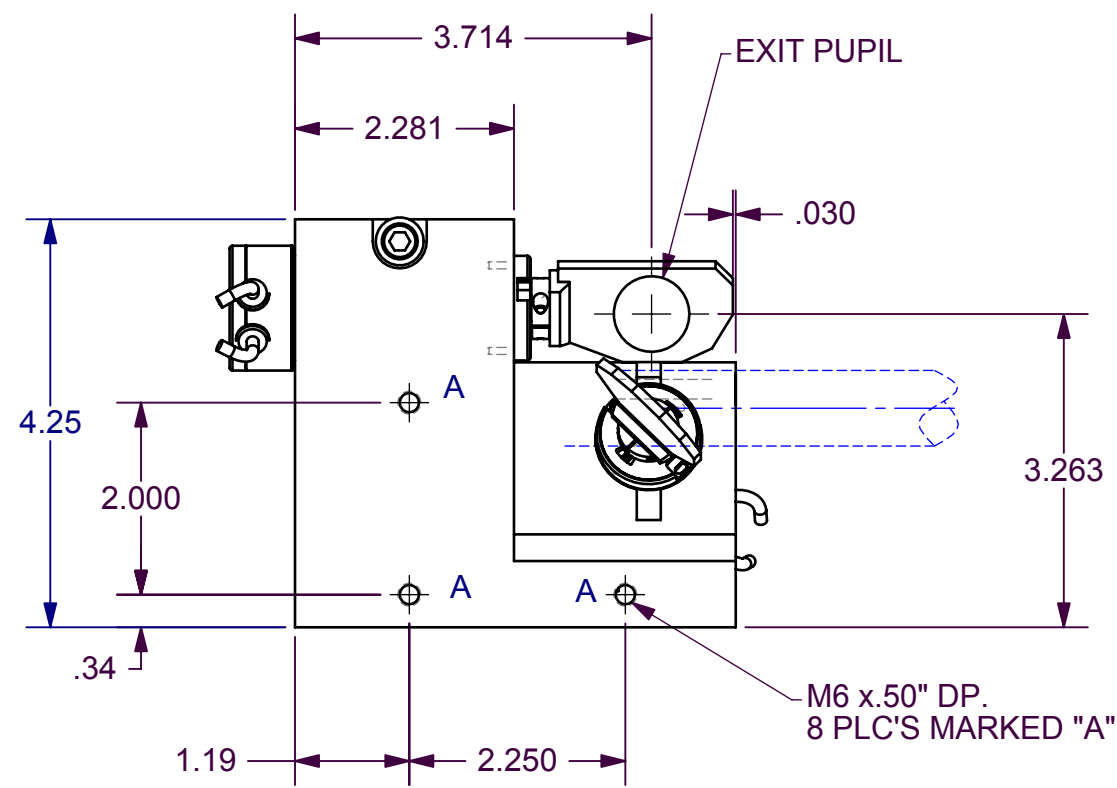
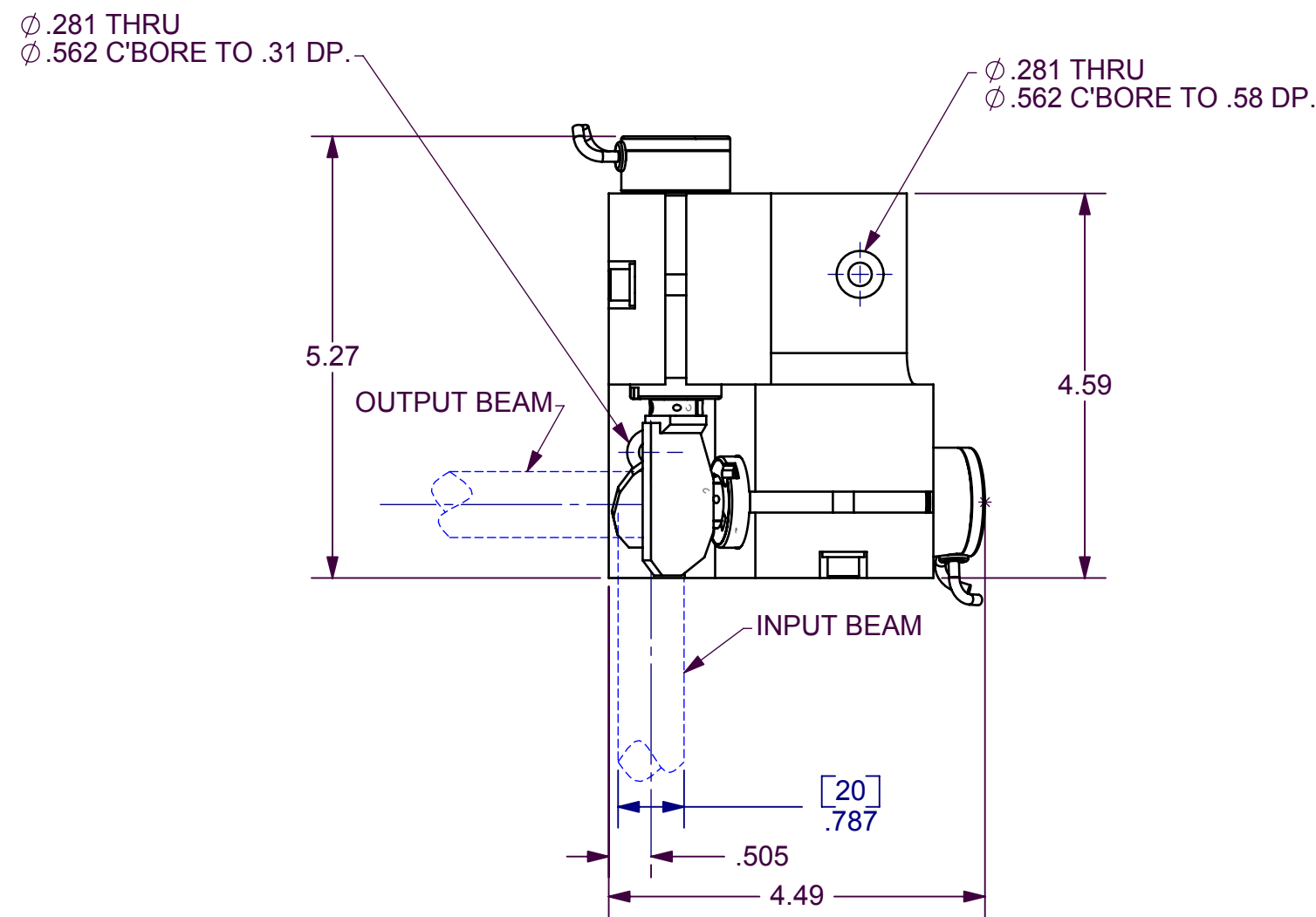
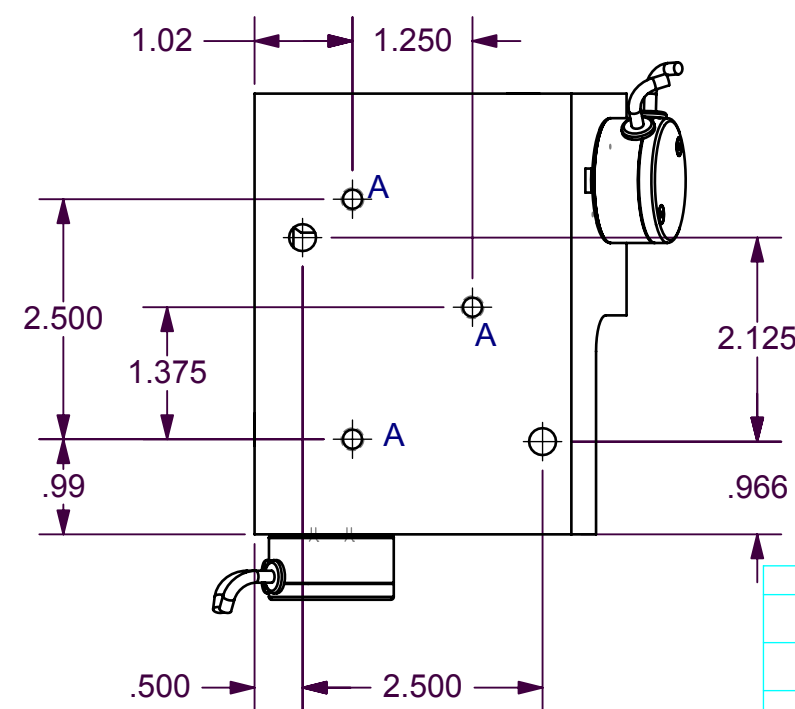


REVISIONS				
ECO	REV	DESCRIPTION	APPR	DATE
3435	B	Add note for clamp screw torque Add dimension .768 from Y spot center to XY mount face Add dimension .800 from Y scanner bore center to XY mount face Remove dimension 2.872, add 3.672 REF. Instead Add dimension 3.88 to show the XY mount bottom size	JZ	05/16/06
3937	C	(1)C'bore in top center view chg'd fr .58dp to .31dp	PTH	08/27/07
4061	D	4.25 WAS 4.250; 1.016 WAS 1.125	JZ	12/12/07



AUXILIARY VIEW
SCALE 1:1
DIMENSIONS ON THIS VIEW REPRESENT SMALLEST DISTANCES DURING MIRRORS' FULL ANGULAR RANGE.



- NOTES:
1. ALL DIMENSIONS ARE FOR REFERENCE ONLY.
2. RECOMMENDED X-Y MOUNT CLAMP SCREW TORQUE = 140 in*lb (15.82 N*m).
3. CLAMP SCREW TORQUE TOLERANCE = $\pm 5\%$.

These drawings and specifications are the property of CAMBRIDGE TECHNOLOGY and shall not be reproduced, or copied, or used as the basis for the manufacture, or sale of apparatus without the written permission of CAMBRIDGE TECHNOLOGY, INC.

UNLESS OTHERWISE SPECIFIED DIMENSIONS ARE IN INCHES		DRN		CAMBRIDGE TECHNOLOGY, INC. 25 HARTWELL AVENUE LEXINGTON, MA 02421 - USA
TOLERANCES		ENG	AA 03/13/03	
.XX \pm .010	ANGLES \pm 0°-30'	APPR		TITLE 6240 X-Y MOUNT INTERFACE, RH ϕ 20mm, 40° OPT.
.XXX \pm .005		PROJECTION		
.XXXX \pm .0005		DRAWING SIZE: C		DRW. NO. D05364
[] INDICATES mm				
SURFACE ROUGHNESS $\sqrt{63}$	BREAK ALL SHARP EDGES			SCALE 1:2
MATERIAL	N/A			SHEET 1 OF 1
FINISH	N/A			
USED ON				